

| Specifications | |
|-----------------------------------|---|
| Engine | Multi point fuel injection G12B BS - IV |
| Maximum Power | 48 kW @ 6000 rpm |
| Maximum Torque | 85 Nm @ 3000 rpm |
| Displacement | 1196 cc |
| Cylinder System | DOHC |
| Fuel Distribution | MPFI |
| Transmission | |
| Type | 5MT |
| Gearbox | 5 Forward and 1 Reverse |
| Clutch | Single Plate Dry Friction |
| Brake | |
| Brake Control Valve | LSPV |
| Front | Ventilated Disk |
| Rear | Drum Brake |
| Suspension and Steering | |
| Front | Mc Pherson Strut with Coil Spring |
| Leaf Spring | Leaf Spring with Rigid Axle |
| Steering | Manual - Rack and Pinion Gear |
| Wheel and Tyre | |
| Tyre | 145 R12 LT8PR |
| Measurements | |
| Length | 3800 mm |
| Width | 1562 mm |
| Height | 1868 mm |
| Wheel Base | 2110 mm |
| Front Track | 1345 mm |
| Rear Track | 1330 mm |
| Length of Deck | 2183 mm |
| Breadth of Deck | 1488 mm |
| Height of Deck | 300 mm |
| Minimum Ground Clearance(Unladen) | 160 mm |
| Turning Radius | 4.3 m |
| Performance | |
| Top Speed | 80 km/h |
| Gradeability | 18% |
| Weight | |
| GVW | 1600 kg |
| Kerb | 975 kg |
| Payload | 625 kg |
| Capacity | |
| Seating Capacity | Driver+1 |
| CNG Cylinder Capacity | 70 Litre(Water Equivalent) |

| Equipment List | |
|--|---|
| Exterior | |
| Tailgate Opening Function with Handle | S |
| Tailgate Chain | S |
| Front Wiper (2- Speed) | S |
| ORVM (Driver and Co-Driver) | S |
| Spare Tyre | S |
| Rope Hooks | S |
| Mud Flap | S |
| Rear Fender | S |
| Front body graphics | S |
| Side door body graphics | S |
| Interior (Comfort, Convenience & Utility) | |
| Cabin Main Light (2 - Position) | S |
| Sun Visor | S |
| Driver Side Pocket | S |
| Sliding Back Window | S |
| Assist Grip (Driver & Co-driver) | S |
| Bottle Holder | S |
| Instrument Panel Upper Tray (2 Nos.) | S |
| 12V Accessory Socket | S |
| Floor Carpet | S |
| 3-Spoke Steering Wheel | S |
| Sliding Driver Seat | S |
| Safety Features | |
| Seat Belts (Retractable) | S |
| Locking Glove Box (with Key) | S |
| Headlamp Levelling | S |
| Steering Lock | S |
| Reflective Tape (Front/Rear) | S |
| Reflector Front (white) | S |
| Reflector Rear (red) | S |
| First-Aid Kit | S |
| Warning Triangle | S |
| Hazard Lamp | S |
| Front Disc Brake | S |
| Brake LSPV | S |
| Stepney Lock Provision | S |
| Battery Lock Provision | S |
| Fire Extinguisher | S |
| S:Standard | |



Dealer Stamping Area

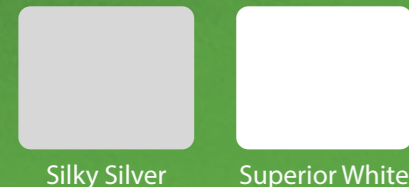
*Fuel Efficiency as certified by test agency under rule 115 of the CMVR, 1989.



SUPER CARRY

A POWERFUL MINI TRUCK

GO GREEN, GO FURTHER WITH CNG



For more details contact | Toll free No: 1800 102 1800, 1800 1800 180

Maruti Suzuki India Limited, reserves the right to change without notice, prices, colours, equipments, specifications, variants and also to discontinue models. Accessories and features shown in the pictures may not be part of standard equipment, and will differ according to the variant. For variant-specific features, refer to the equipment list. Colours shown may vary from actual body colours due to printing on paper. Images used are for illustration purposes only.

MARUTI SUZUKI INDIA LTD., Plot No. 1, Nelson Mandela Road, Vasant Kunj, New Delhi - 110070, Tel. 011-46781000.





Introducing the Maruti Suzuki Super Carry CNG, with its i-GPI Technology. Now enjoy better value for money.

The Factory-Fitted CNG with an i-GPI Edge.



High on Fuel Efficiency

Mileage of 23.24* km/kg in CNG mode.



Smooth Pickup and Drive

Intelligent Gas port Injection Technology that ensures smooth pick-up and a pleasant drive.



Enhanced Safety

A micro-switch that cuts off fuel supply is provided on the fuel lid, which prevents accidental starting of the vehicle during CNG refueling.



Complete Peace of Mind

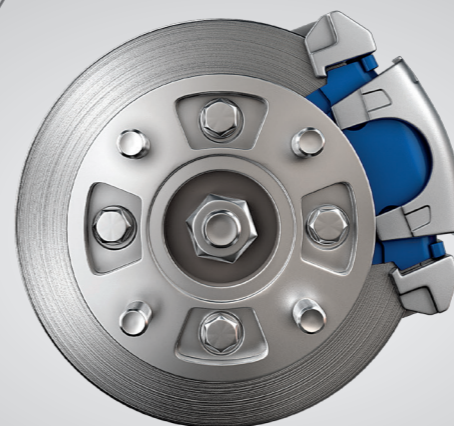
Maruti Suzuki's Standard Warranty and wide service network ensures that you do not have to worry about anything.

Extra comfortable

Super Carry comes with excellent features to ensure comfortable and easier rides. Some of its unique features are:

- Single long, heat-resistant seat
- Spacious cabin with extra leg space
- Best-in-class interiors with loads of storage space

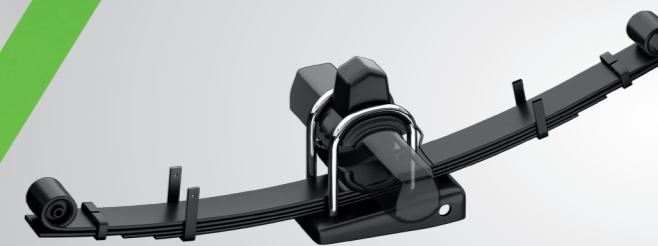
Your safety is assured with the trust of Maruti Suzuki



Front Disk Brakes

Easy handling even with heavy loading

- Large steering wheel that feels light even with heavy loads
- Low turning radius of 4.3m



Strong & Sturdy leaf spring Suspension



Easy Gear Shift

A specially designed new and sturdy supreme strut



A powerful engine that keeps you moving forward

- Better pick-up (Higher torque - 85 Nm @ 3000 rpm)
- Higher load carrying capacity
- Higher top speed of 80 km/h
- 5 Speed Transmission



*Fuel Efficiency as certified by test agency under rule 115 of the CMVR, 1989.

Bigger and stable deck



A large 3.25 m² deck to maximize loading capacity (2183x1488x300mm)